

**CITY OF IDAHO CITY  
BOISE COUNTY, STATE OF IDAHO**

**RESOLUTION No. 2024- 04**

**A RESOLUTION OF THE CITY COUNCIL OF THE CITY OF IDAHO CITY:**

- **Making findings; and**
- **Consenting to participate in a new proposed ambulance service district and dissolution of the East Boise County Ambulance District; and**
- **Directing the City Clerk; and**
- **Setting an Effective Date.**

**Section 1. Findings: The City Council makes the following findings:**

- 1.1 The Mayor and the City Council have been presented with the *Petition to Form an Ambulance Service District Pursuant to Idaho Code § 31-3911 and to Dissolve the East Boise County Ambulance District pursuant to Idaho Code Section 31-3908(1)(f)*. A true and correct copy of this petition is attached hereto marked “Exhibit A” (the “Petition”); and
- 1.2 The City of Idaho City is an incorporated city within the boundaries of the proposed ambulance service district as stated in the Petition; and
- 1.3 It is required by Idaho Code § 31-3911(2) that certified copies of all city council resolutions, by any incorporated city that lies within the proposed boundaries of the proposed ambulance service district consenting to participate in the ambulance service district, must be filed by the petitioners together with the Petition; and
- 1.4 The Mayor and the City Council find that it is in the best interests of the residents and persons found within the boundaries of the City, that the City Council support the Petition, and agree to participate in the proposed new ambulance service district as set forth in the Petition, and consent to the dissolution of the East Boise County Ambulance District subject to voter approval of the proposed new ambulance district.

**NOW, THEREFORE, BE IT RESOLVED** by the City Council as follows:

**Section 2. Action:**

- 2.1 The Mayor and City Council of the City of Idaho City do hereby consent to participate in the proposed ambulance service district as stated in the Petition, if the voters approve the formation of the new proposed East Boise County EMS District; and consent to the Board of County Commissioners dissolving the existing East Boise County Ambulance District

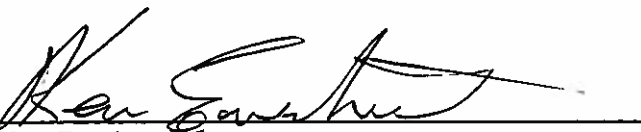
**Section 3. Directing the Clerk:**

3.1 The Clerk is hereby directed to file this Resolution forthwith in the official records of this City; and to certify this resolution to the Petitioners of the Petition for filing with the Boise County Clerk together with the Petition.

**SECTION 4. Effective Date:**

4.1 This resolution shall be in full force and effect after its passage and approval


PASSED BY THE CITY COUNCIL of the City of Idaho City this 12 day of June, 2024.

Signed:   
Ken Everhart, Mayor

**ATTEST:**

I certify that the above Resolution was duly adopted by the City Council of the City of Idaho City on the 12 day of June, 2024 by the following vote:

Ayes: 3  
Nos: \_\_\_\_\_  
Abstain Absent: 1

By:   
Nancy L. Ptak, City Clerk

**EXHIBIT A**  
**BEFORE THE BOARD OF COUNTY COMMISSIONERS**  
**OF**  
**BOISE COUNTY, IDAHO**

IN RE: Petition to form an ambulance service	)	Matter
district pursuant to Idaho Code Section 31-	)	No. _____
3911 and to dissolve the <b>East Boise County</b>	)	
<b>Ambulance District</b> by Qualified Boise	)	<b>PETITION TO FORM AN</b>
County Elector Petitioners.	)	<b>AMBULANCE SERVICE</b>
	)	<b>DISTRICT PURSUANT TO IDAHO</b>
	)	<b>CODE SECTION 31-3911; and TO</b>
	)	<b>DISSOLVE THE EAST BOISE</b>
	)	<b>COUNTY AMBULANCE</b>
	)	<b>DISTRICT PURSUANT TO IDAHO</b>
	)	<b>CODE SECTION 31-3908(1)(f).</b>
	)	
	)	

COME NOW, the below stated Petitioners, pursuant to Idaho Code § 31-3911, and hereby petition the Commissioners of Boise County, state of Idaho, to receive, process and grant this Petition as herein requested and as herein set forth.

Pursuant to the requirements of Idaho Code § 31-3911, the Petitioners set forth the following:

1. **Boundaries:** The boundaries of the proposed ambulance service district are as follows:

Beginning at the Northwest corner of Section 6, T.10 N. , R. 7 E. , B.M. Thence South 6 miles more or less along the township line to the Southwest corner of Section 31, T. 10 N. , R. 7 E. , B.M. Thence West along the South line of Section 36, T. 10 N. , R. 6 E. , B.M. to the Northwest corner of Section 6, T. 9 N. , R. 7 E. , B.M. Thence South 6 miles more or less along the township line to the Southwest corner of Section 31, T. 9 N. , R. 7 E. , B.M. Thence West 6 miles more or less to the Northwest corner of Section 6 , T. 8 N. , R. 6 E. , B.M. Thence South along the township line 2 miles more or less to the Northeast corner of Section 13, T. 8 N. , R. 5 E. , B.M. Thence West along the North boundaries of Sections 13, 14, 15, 16, and 17 in T. 8 N. , R. 5 E. , B.M. , 5 miles more or less to the Northwest corner of Section 17, T. 8 N. , R. , 5 E. , B.M. Thence South along the West boundaries of Sections 17, 20, and 29 in T. 8 N. , R. 5 E. , B.M. , 3 miles more or less to the Southwest corner of Section 29, T. 8 N. , R. 5 E. , B.M. Thence West along the North boundaries of Section 31, T. 8 N. , R. 5 E. , B.M. , and Sections 35 and 36, T. 8 N. , R. 4 E. , B.M. , 3 miles more or less to the Northwest corner of said Section 35. Thence South along the West boundary of Section 35, 1 mile more or less to the Southwest corner of the Section. Thence West along the North boundaries of T. 7 N. , R. 4 E. and T. 7 N. , R. 3 E. , 5 miles more or less to the Northwest corner of Section 1, T. 7 N. , R. 3 E. , B.M. Thence South along the Section line 19 miles more or less to the Northeast corner of Section 11, T. 4 N. , R 3 E. , B.M. Thence West along the North lines of Section 7, 8, 9, 10, and 11 in T. 4 N. , R. 3 E. , B.M. to its intersection with Ada County line. Thence in a Southeasterly direction along the Boise/Ada County line to its intersection with the Elmore County line. Thence in a Northeasterly direction along with Boise/Elmore County line to its intersection with the Custer County line. Thence along the Boise/Custer County line to its intersection with the Valley County line. Thence along the Boise/ Valley County line to the point of beginning.

2. **Name:** The name of the proposed ambulance service district is as follows: *East Boise County EMS District.*
3. **Map:** A map of the proposed ambulance service district is attached and marked Exhibit A and by this reference incorporated herein.
4. **Cities:** The City of Idaho City and the City of Placerville both lie within and are the only incorporated cities that lie within the boundaries of the proposed new ambulance service district.

5. **City Council Resolutions:** Certified copies of the resolutions of the City Council of the City of Idaho City and the City Council of the City of Placerville both consenting to participate in the proposed new ambulance service district and consenting to the dissolution of the East Boise County Ambulance District, have been filed with the Boise County Clerk by the Petitioners at the same time as the filing of this Petition.
6. **Deposit:** The Petitioners will deposit, with the County Clerk, as required by the Boise County Commissioners, a sufficient sum of money to cover the costs of publication of this Petition and all necessary notices required by Idaho Code §§ 31-3911 and 31-3908 (1) (f) and (c).

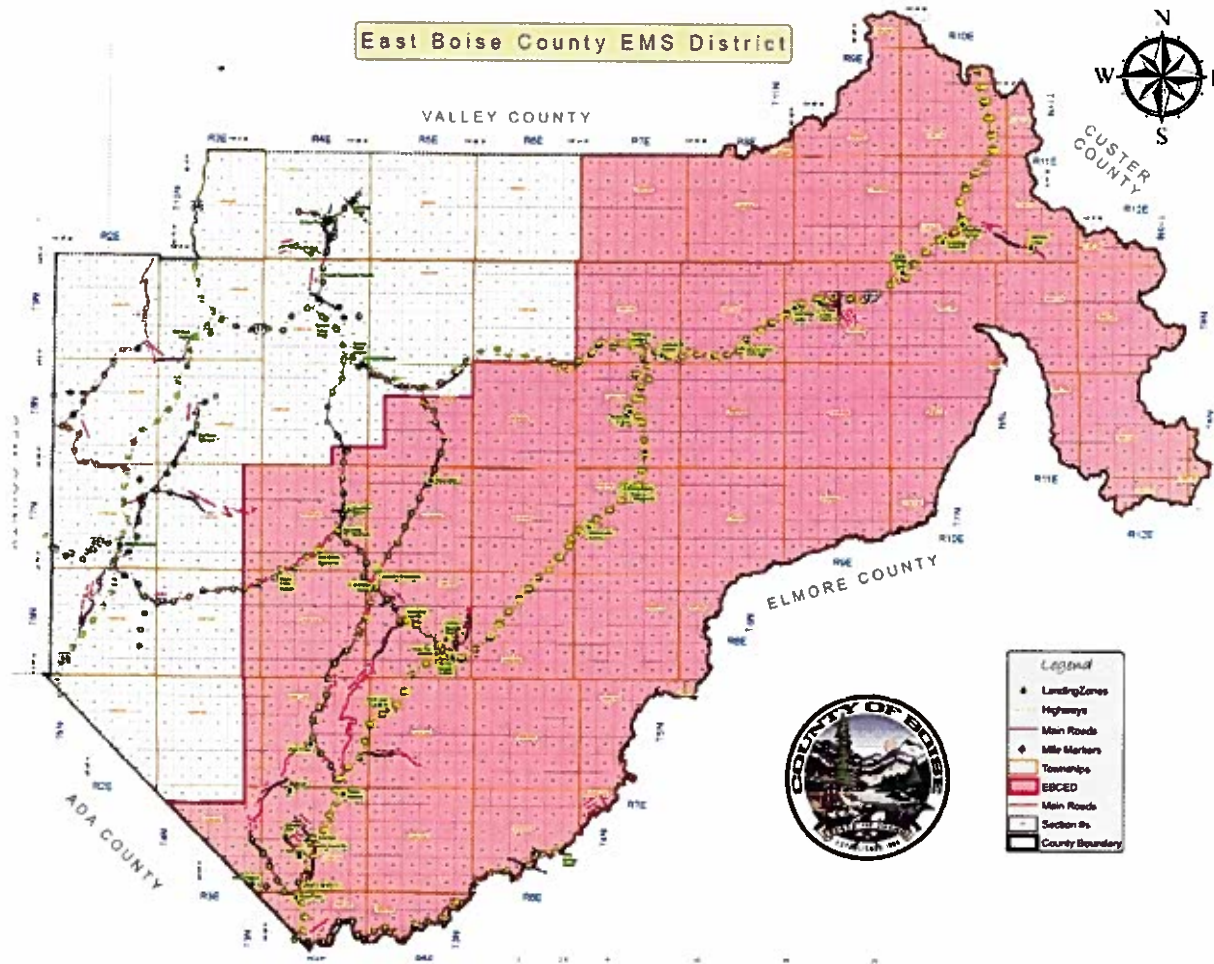
**WHEREFORE,** Petitioners pray as follows:

1. That pursuant to Idaho Code § 31-3911(1), upon the filing of this Petition with the County Clerk and Recorder, that the County Clerk examine this Petition and certify that the required number of Petitioners have signed this Petition; and
2. That pursuant to Idaho Code § 31-3911(4), the County Clerk transmit this Petition together with the City of Idaho City Resolution, and the City of Placerville Resolution to the Board of County Commissioners; and
3. That pursuant to Idaho Code § 31-3908(1)(f), the Board of County Commissioners approve a resolution of their intent to consider, subject to conditions and process required by law, the dissolution of the East Boise County Ambulance District with a plan of dissolution which includes that all debts and expenses of the East Boise County Ambulance District be paid and any remaining assets of the said District to be transferred to the East Boise County EMS District subject to and contingent upon the following:

- The County Commissioners granting the petition to create a new ambulance service district and call for a special election on the question; and
  - a majority of the electors at the special election voting “yes” to the creation of a new ambulance service district.
4. That the Board of County Commissioners cause the texts of this Petition and their resolution of intent to consider, subject to conditions and process required by law, the dissolution of the East Boise County Ambulance District be published once a week for at least three (3) consecutive weeks in the newspaper of general circulation within the County together with a notice of the time of the meeting of the Board of County Commissioners when this Petition and the Board’s resolution of intent will be heard together with a statement that all persons interested may appear and be heard as provided in Idaho Code §§ 31-3911(4) and 31-3908(1)(f); and
  5. That after the conduct of the public hearings, the Board of Commissioners enter an order granting this Petition fixing the name and boundaries of the proposed district as petitioned and as provided in Idaho Code § 31-3911(5); and
  6. That following the Board of County Commissioners entering the order granting this Petition, that the County Clerk publish notice of an election to be held at the next election date as authorized by law for the purpose of determining whether or not the proposed ambulance service district shall be organized as provided in Idaho Code § 31-3911(6); and
  7. If at the special election more than one-half (1/2) of the votes cast are in favor of creating the new ambulance service district, the County Commissioners convene a meeting and:

- Order the territory as petitioned is duly organized as an ambulance service district under the name designated in the ballot; and
- Divide the new ambulance service district into three (3) subdivisions and appoint the first three (3) commissioners of the new ambulance service district; and
- Adopt a resolution to dissolve the East Boise County Ambulance District, pay its debts and expenses and transfer the remaining assets to the new ambulance service district; and
- Certify a copy of the order, creating the ambulance service district and the resolution dissolving the East Boise County Ambulance District, and cause the same to be filed for record in the office of the county recorder, the state tax commission and with the governor.

### EXHIBIT A MAP



#### PETITIONERS' DECLARATIONS:

I, the undersigned, being a qualified elector of Boise County, state of Idaho, residing within the boundaries of the proposed new East Boise County EMS District as legally described in paragraph 1 of this Petition, so hereby certify and declare, under penalty of perjury pursuant to the law of the state of Idaho, that I reside at the place set opposite my name and that I join in the above-stated petition to the Commissioners of Boise County to grant this Petition and proceed, as herein petitioned, to call an election on the creation of a new ambulance service district pursuant to Idaho Code Section 31-3911.

**PETITIONERS SIGNATURE LINES NOT INCLUDED FOR PURPOSES OF THIS EXHIBIT**

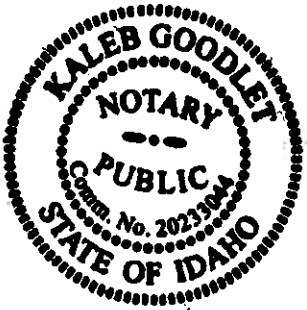
*W:\Work B Boise County Ambulance District East Boise County EMS District\Formation Documents and communications\02\City of Idaho City Resolution - Agreeing to Participate in new Ambulance District - 5.28.24\wfg.docx*



**CITY OF IDAHO CITY**  
**Certification of Resolution 2024-04**

STATE OF IDAHO    )  
                                  : ss.  
County of Boise    )

I certify that this is a true and correct copy of Resolution 2024-04, an original record of the City of Idaho City, in the possession of Nancy L. Ptak, City Clerk of the City of Idaho City.



[seal]

Dated: 6/12/24

  
Signature of Notary Public

My commission expires: 7/20/29